

Client _____ Quantity _____
Project _____ Position _____

ROC 700

Gas solid top, top



Model: R70/80TPG/T

Cod: MP01054113001

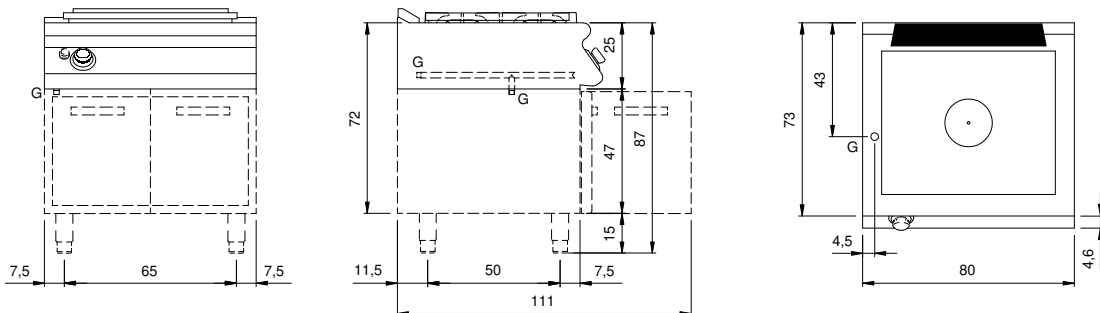
Technical data

Modularity:	Top
Dimension (mm):	800x730x280
Total gas power (Kcal/h):	7739
Total gas power (kW):	9
Whole-plate power gas (kW):	9
Gas connection:	1/2"
Net volume (m3):	0,164
Packing dimensions (mm):	880x856x509
Gross weight (Kg):	82,5
Gross volume (m3):	0,383

Features

Working top:	Made of AISI 304 stainless steel with a thickness of 20/10 mm
Knobs:	Made of aluminum with IPX5 water protection
Flue:	Removable gas exhaust flue grill made of cast iron
Kit Gas:	natural gas conversion kit 30/50 m/bar (tested with natural gas G20)

Technical draw



G: Gas connection 1/2"