



Client _____ Quantity _____
Project _____ Position _____

ROC 700

Gas solid top, 2 burners, on cabinet with doors

Model: R70/80TPPGF/P

Cod: MP01054113008

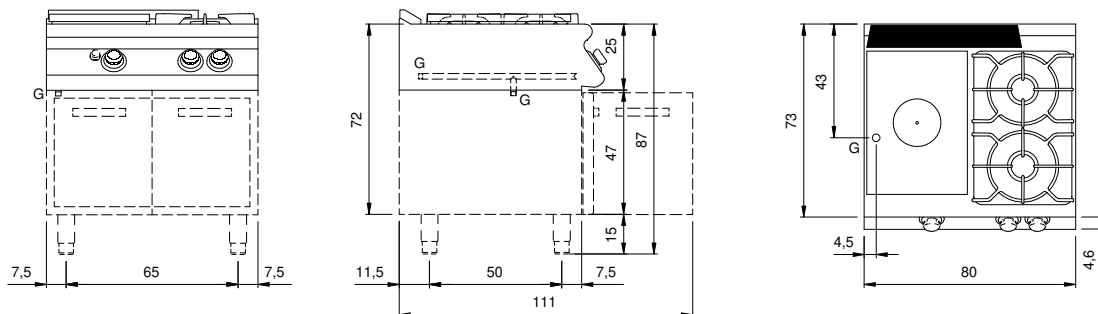
Technical data

Modularity:	On cabinet with doors
Dimension (mm):	800x730x870
Total gas power (Kcal/h):	15478
Total gas power (kW):	18
Whole-plate power gas (kW):	6
Gas connection:	1/2"
Net volume (m3):	0,508
Packing dimensions (mm):	880x856x1109
Gross weight (Kg):	128,6
Burner power 3 (kW):	6
Burner power 4 (kW):	6
Gross volume (m3):	0,835

Features

Working top:	Made of AISI 304 stainless steel with a thickness of 20/10 mm
Knobs:	Made of aluminum with IPX5 water protection
Handles:	The brushed aluminum handles allow for a secure and sturdy grip with a ergonomic lines
Flue:	Removable gas exhaust flue grill made of cast iron
Kit Gas:	natural gas conversion kit 30/50 m/bar (tested with natural gas G20)

Technical draw



G: Gas connection 1/2"