



Client _____ Quantity _____
 Project _____ Position _____

ROC 900

Gas bain marie, on cabinet with doors

Model: R90/80BMG/P

Cod: MP01254114005

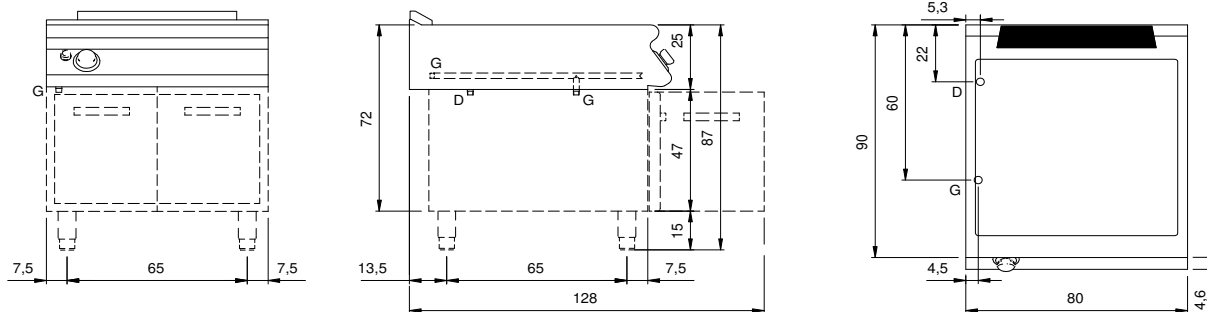
Technical data

| | |
|----------------------------------|-----------------------|
| Modularity: | On cabinet with doors |
| Dimension (mm): | 800x900x870 |
| Total gas power (Kcal/h): | 5160 |
| Total gas power (kW): | 6 |
| Nr. Wells: | 1 |
| Well litres 1: | 52 |
| Well dimensions 1 (mm): | 730x685x155 |
| Gas connection: | 1/2" |
| Drain size: | 1" |
| Net volume (m3): | 0,626 |
| Packing dimensions (mm): | 880x1026x1109 |
| Gross weight (Kg): | 87 |
| Gross volume (m3): | 1,001 |

Features

| | |
|----------------------|--|
| Working top: | Made of AISI 304 stainless steel with a thickness of 20/10 mm |
| Knobs: | Made of aluminum with IPX5 water protection |
| Handles: | The brushed aluminum handles allow for a secure and sturdy grip with a ergonomic lines |
| Flue: | Removable made of cast iron |
| Water inflow: | Manual input |
| Kit Gas: | natural gas conversion kit 30/50 m/bar (tested with natural gas G20) |

Technical draw



G: Gas connection 1/2"

D: Drain for water