

Client _____ Quantity _____
Project _____ Position _____

ROC 900

Electric range, 2 round plates, top



Model: R90/40PCEQ/T

Cod: MP01014124001

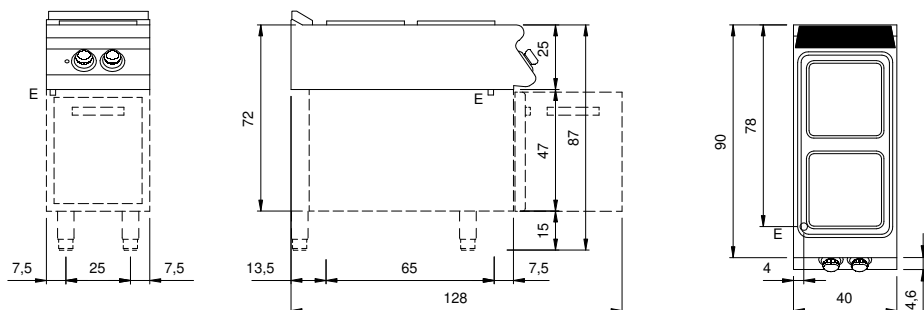
Technical data

Modularity:	Top
Dimension (mm):	400x900x280 mm
Total electric power (kW):	8
Electric power (V):	380-415
Ampere (A):	18,5
Phases:	3N
Cable section (mmq):	5G2,5
Frequency (Hz):	50-60
Net volume (m3):	0,101
Packing dimensions (mm):	480x1026x475 mm
Gross weight (Kg):	87,5
Gross volume (m3):	0,234

Features

Working top:	Made of AISI 304 stainless steel with a thickness of 20/10 mm
Knobs:	Made of aluminum with IPX5 water protection
Flue:	Removable made of cast iron

Technical draw



E: Electric power