

Client _____ Quantity _____
Project _____ Position _____**FUN 700**

Electric range, 2 square plates, top

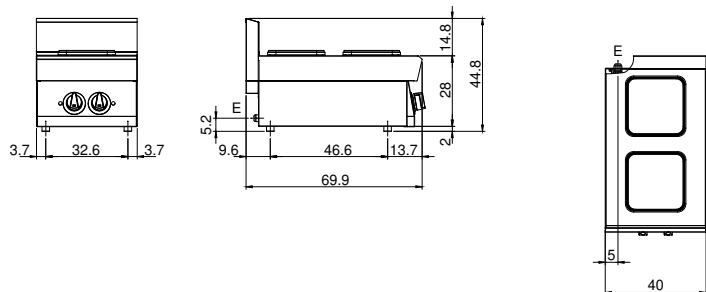
**Model:** F70/40PCEQ/T**Cod:** MP01012123004**Technical data**

Modularity:	Top
Dimension (mm):	400x700x300 mm
Total electric power (kW):	5,2
Electric power (V):	380-415
Ampere (A):	12
Phases:	3N
Cable section (mmq):	5G1,5
Frequency (Hz):	50-60
Net volume (m3):	0,084
Packing dimensions (mm):	477x776x612 mm
Gross weight (Kg):	32
Gross volume (m3):	0,227

Features

Working top:	Realizzato in acciaio inox AISI 304 con spessore 10/10 mm
Knobs:	Knobs are made from a sturdy heat-resistant polymer blend and are equipped with liquid anti-leakage washer

Technical draw



E: Electric power