

Client _____ Quantity _____
 Project _____ Position _____



ROC 900

Gas solid top, 4 burners pressed worktop, on cabinet with doors

Model: R90/120TPPGF/P

Cod: MP01054114012

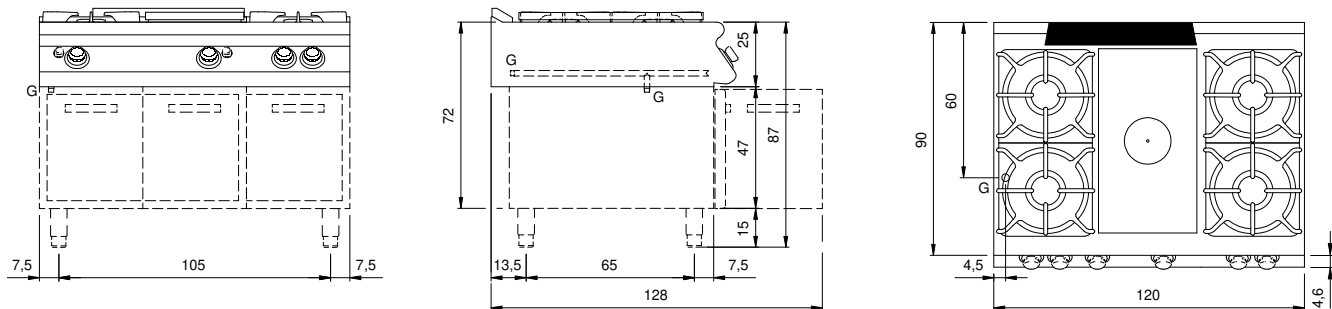
Technical data

Modularity:	On cabinet with doors
Dimension (mm):	1200x900x870
Total gas power (Kcal/h):	36974
Total gas power (kW):	43
Whole-plate power gas (kW):	7
Gas connection:	1/2"
Net volume (m3):	0,94
Packing dimensions (mm):	1280x1026x1109
Gross weight (Kg):	162
Burner power 1 (kW):	6
Burner power 2 (kW):	10
Burner power 3 (kW):	10
Burner power 4 (kW):	10
Gross volume (m3):	1,456

Features

Working top:	Made of AISI 304 stainless steel with a thickness of 20/10 mm
Knobs:	Made of aluminum with IPX5 water protection
Handles:	The brushed aluminum handles allow for a secure and sturdy grip with a ergonomic lines
Flue:	Removable made of cast iron
Kit Gas:	natural gas conversion kit 30/50 m/bar (tested with natural gas G20)

Technical draw



G: Gas connection 1/2"