



Client _____ Quantity _____
 Project _____ Position _____

ROC 900

Gas solid top, 4 burners pressed worktop, on open cabinet

Model: R90/120TPPGF/A

Cod: MP01054114011

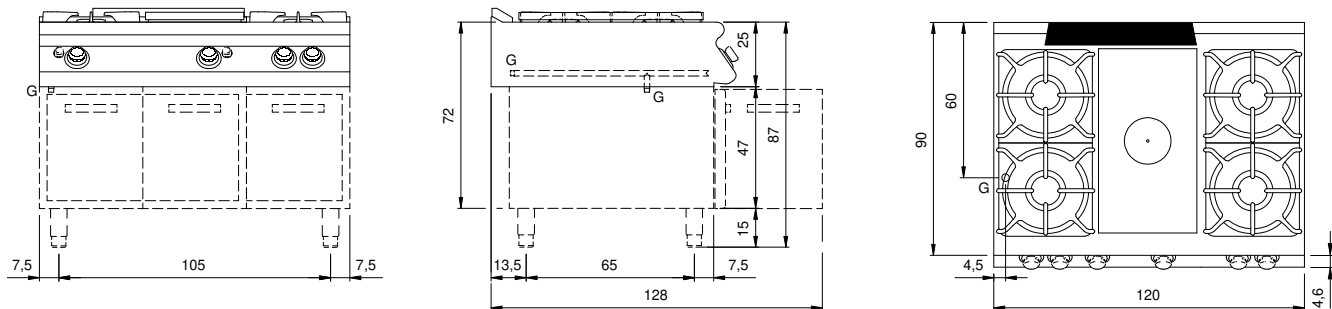
Technical data

| | |
|------------------------------------|-----------------|
| Modularity: | On open cabinet |
| Dimension (mm): | 1200x900x870 |
| Total gas power (Kcal/h): | 36974 |
| Total gas power (kW): | 43 |
| Whole-plate power gas (kW): | 7 |
| Gas connection: | 1/2" |
| Net volume (m3): | 0,94 |
| Packing dimensions (mm): | 1280x1026x1109 |
| Gross weight (Kg): | 151 |
| Burner power 1 (kW): | 6 |
| Burner power 2 (kW): | 10 |
| Burner power 3 (kW): | 10 |
| Burner power 4 (kW): | 10 |
| Gross volume (m3): | 1,456 |

Features

| | |
|---------------------|--|
| Working top: | Made of AISI 304 stainless steel with a thickness of 20/10 mm |
| Knobs: | Made of aluminum with IPX5 water protection |
| Flue: | Removable made of cast iron |
| Kit Gas: | natural gas conversion kit 30/50 m/bar (tested with natural gas G20) |

Technical draw



G: Gas connection 1/2"