

Client _____ Quantity _____
Project _____ Position _____

ROC 900

Lava-stone grill, 1 cooking zone in stainless steel, top



Model: R90/40GRLI/T

Cod: MP01454114011

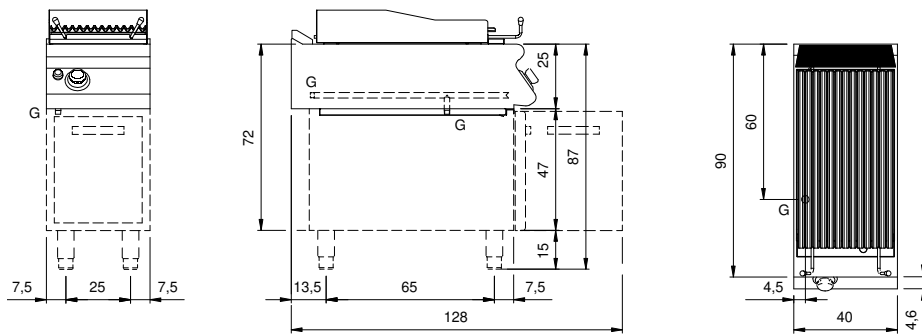
Technical data

Modularity:	Top
Packing dimensions (mm):	480x1026x1075
Gross weight (Kg):	58
Gross volume (m3):	0,529

Features

Grill:	In stainless steel
Working top:	Made of AISI 304 stainless steel with a thickness of 20/10 mm
Knobs:	Made of aluminum with IPX5 water protection
Liquid collection container:	Removable and dishwasher safe
Upright Splash guard:	On three sides
Kit Gas:	natural gas conversion kit 30/50 m/bar (tested with natural gas G20)

Technical draw



G: Gas connection 1/2"