



Client _____ Quantity _____
 Project _____ Position _____

ROC 900

Lava-stone grill, 1 cooking zone in stainless steel, on open cabinet

Model: R90/40GRLI/A

Cod: MP01454114012

Technical data

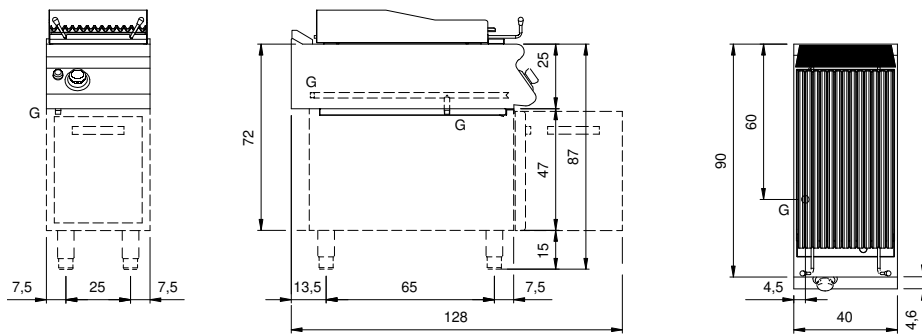
Modularity:	On open cabinet
Packing dimensions (mm):	480x856x1075
Gross weight (Kg):	72
Gross volume (m3):	0,442

Features

Grill:	In stainless steel
Working top:	Made of AISI 304 stainless steel with a thickness of 20/10 mm
Knobs:	Made of aluminum with IPX5 water protection
Liquid collection container:	Removable and dishwasher safe
Upright Splash guard:	On three sides
Kit Gas:	natural gas conversion kit 30/50 m/bar (tested with natural gas G20)

In order to constantly offer the best possible products we reserve the right to make changes on technical specifications without incurring any obligation for equipment previously or subsequently sold.

Technical draw



G: Gas connection 1/2"