



Client _____ Quantity _____
 Project _____ Position _____

ROC 900

Lava-stone grill, 2 cooking zones in stainless steel, on cabinet with doors

Model: R90/80GRLI/P

Cod: MP01454114016

Technical data

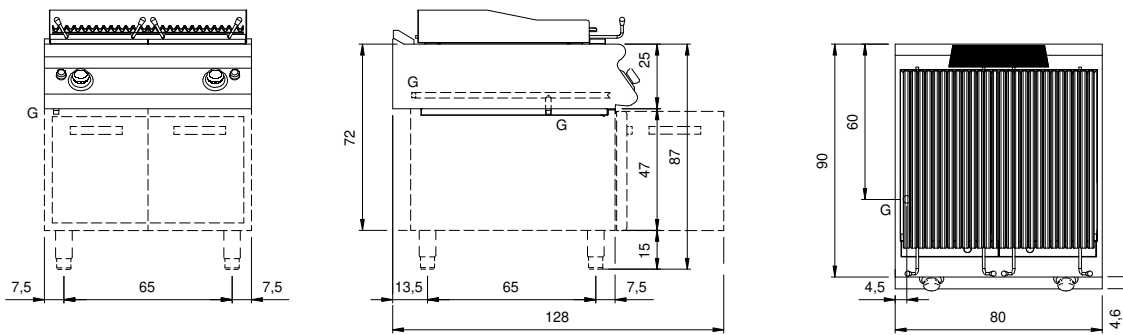
Modularity:	On cabinet with doors
Packing dimensions (mm):	880x1026x1274
Gross weight (Kg):	121
Gross volume (m3):	1,150

Features

Grill:	In stainless steel
Working top:	Made of AISI 304 stainless steel with a thickness of 20/10 mm
Knobs:	Made of aluminum with IPX5 water protection
Handles:	The brushed aluminum handles allow for a secure and sturdy grip with a ergonomic lines
Liquid collection container:	Removable and dishwasher safe
Upright Splash guard:	On three sides
Kit Gas:	natural gas conversion kit 30/50 m/bar (tested with natural gas G20)

In order to constantly offer the best possible products we reserve the right to make changes on technical specifications without incurring any obligation for equipment previously or subsequently sold.

Technical draw



G: Gas connection 1/2"