



Client _____ Quantity _____
Project _____ Position _____

ROC 900

Gas bain marie, on open cabinet

Model: R90/80BMG/A

Cod: MP01254114004

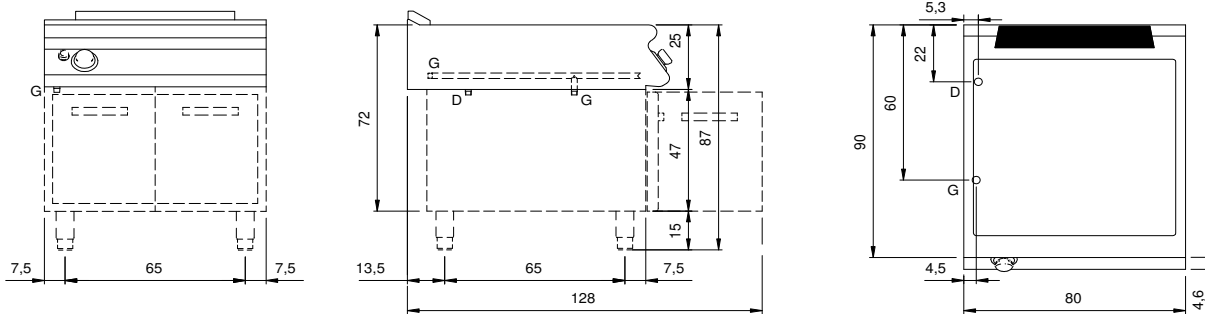
Technical data

Modularity:	On open cabinet
Dimension (mm):	800x900x870
Total gas power (Kcal/h):	5160
Total gas power (kW):	6
Nr. Wells:	1
Well litres 1:	52
Well dimensions 1 (mm):	730x685x155
Gas connection:	1/2"
Drain size:	1"
Net volume (m3):	0,626
Packing dimensions (mm):	880x1026x1109
Gross weight (Kg):	81
Gross volume (m3):	1,001

Features

Working top:	Made of AISI 304 stainless steel with a thickness of 20/10 mm
Knobs:	Made of aluminum with IPX5 water protection
Flue:	Removable made of cast iron
Water inflow:	Manual input
Kit Gas:	natural gas conversion kit 30/50 m/bar (tested with natural gas G20)

Technical draw



G: Gas connection 1/2"

D: Drain for water