



Client _____ Quantity _____
 Project _____ Position _____

ROC 900

Gas bain marie, on cabinet with doors

Model: R90/80BMG/P

Cod: MP01254114005

Technical data

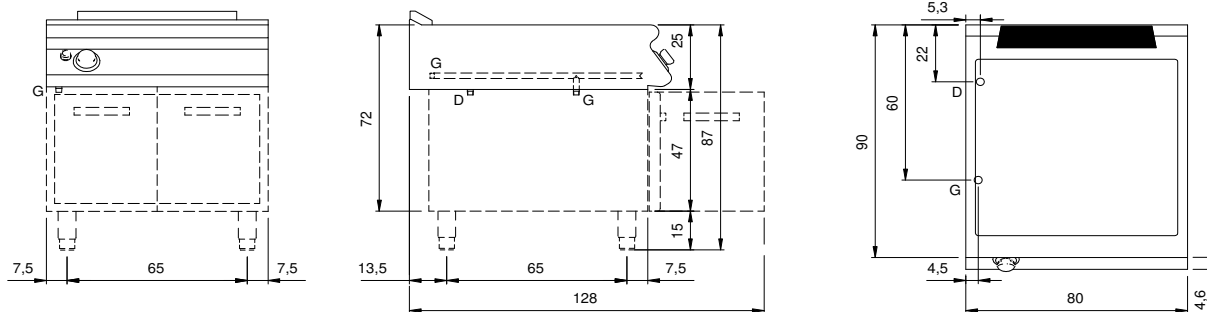
Modularity:	On cabinet with doors
Dimension (mm):	800x900x870
Total gas power (Kcal/h):	5160
Total gas power (kW):	6
Nr. Wells:	1
Well litres 1:	52
Well dimensions 1 (mm):	730x685x155
Gas connection:	1/2"
Drain size:	1"
Net volume (m3):	0,626
Packing dimensions (mm):	880x1026x1109
Gross weight (Kg):	87
Gross volume (m3):	1,001

Features

Working top:	Made of AISI 304 stainless steel with a thickness of 20/10 mm
Knobs:	Made of aluminum with IPX5 water protection
Handles:	The brushed aluminum handles allow for a secure and sturdy grip with a ergonomic lines
Flue:	Removable made of cast iron
Water inflow:	Manual input
Kit Gas:	natural gas conversion kit 30/50 m/bar (tested with natural gas G20)

In order to constantly offer the best possible products we reserve the right to make changes on technical specifications without incurring any obligation for equipment previously or subsequently sold.

Technical draw



G: Gas connection 1/2"

D: Drain for water