



Client _____ Quantity _____
 Project _____ Position _____

ROC 900

Motorized tilting gas bratt pan, stainless steel well, capacity 80 litres

Model: R90/80BRG/80X/M **Cod:** MP01614114004

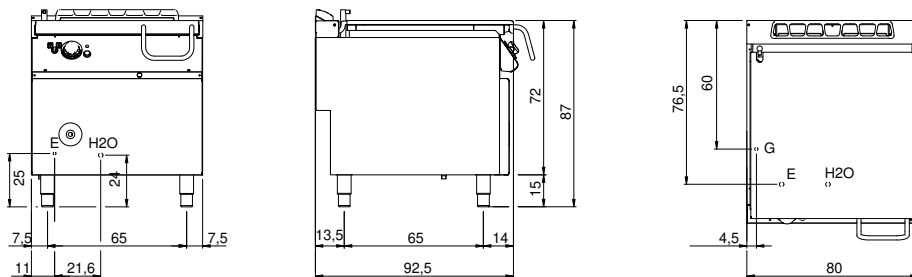
Technical data

Modularity:	On closed cabinet
Dimension (mm):	800x900x870
Total electric power (kW):	0,2
Total gas power (Kcal/h):	17197
Total gas power (kW):	20
Cooking zone dimensions 1 (LxD mm):	fondo vasca 680x567
Nr. Wells:	1
Well litres 1:	80
Well dimensions 1 (mm):	680x567x170
Gas connection:	1/2"
Electric power (V):	220-240
Ampere (A):	1,5
Phases:	1
Cable section (mmq):	3G1
Frequency (Hz):	50
Cold water inflow:	3/4"
Cold water pressure (bar):	Pressione Max 5 bar
Net volume (m3):	0,626
Packing dimensions (mm):	880x1026x1109
Gross weight (Kg):	174
Gross volume (m3):	1,001

Features

Working top:	Made of AISI 304 stainless steel with a thickness of 20/10 mm
Material of plate:	Inox
Plate finish:	Smooth
Tipologia ribaltamento:	Motorizzata
Knobs:	Made of aluminum with IPX5 water protection
Water inflow:	With solenoid valve
Kit Gas:	natural gas conversion kit 30/50 m/bar (tested with natural gas G20)

Technical draw



G: Gas connection 1/2"

E: Electric power

H2O: Water inflow 3/4"