

Client _____ Quantity _____
Project _____ Position _____**FUN 700**

Gas griddle, smooth chromed plate, top

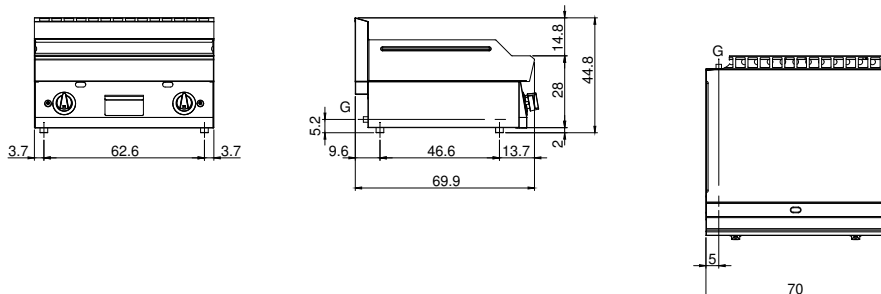
**Model:** F70/70FTG/CL/T**Cod:** MP01372113011**Technical data**

| | |
|--|-------------|
| Modularity: | Top |
| Dimension (mm): | 700x700x300 |
| Total gas power (Kcal/h): | 9803 |
| Total gas power (kW): | 11,4 |
| Cooking zone dimensions 1 (LxD mm): | 696x520 |
| Gas connection: | 1/2" |
| Net volume (m3): | 0,147 |
| Packing dimensions (mm): | 776x776x636 |
| Gross weight (Kg): | 84 |
| Gross volume (m3): | 0,383 |

Features

| | |
|---------------------------|--|
| Working top: | Realizzato in acciaio inox AISI 304 con spessore 10/10 mm |
| Material of plate: | Chrome |
| Plate finish: | Smooth |
| Knobs: | Knobs are made from a sturdy heat-resistant polymer blend and are equipped with liquid anti-leakage washer |
| Plate: | Chromed |
| Kit Gas: | natural gas conversion kit 30/50 m/bar (tested with natural gas G20) |

Technical draw



G: Gas connection 1/2"