



Client \_\_\_\_\_ Quantity \_\_\_\_\_  
 Project \_\_\_\_\_ Position \_\_\_\_\_

## FUN 700

Gas boiling pan indirect-heated, 50 liters

**Model:** F70/70PGI/50

**Cod:** MP01532113000

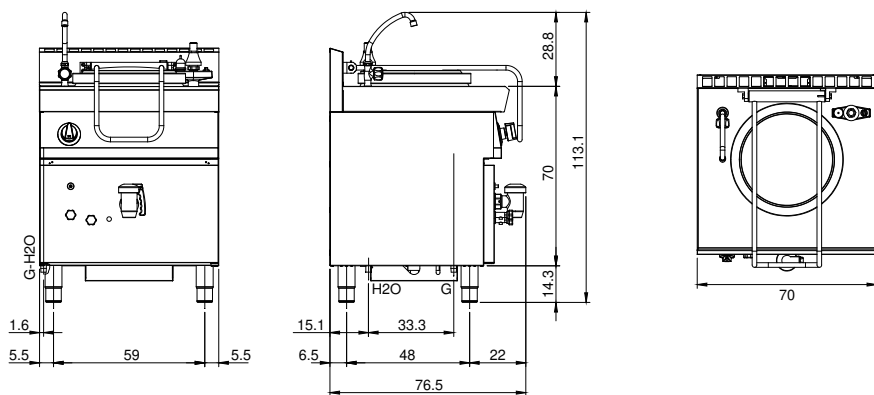
### Technical data

<b>Modularity:</b>	On closed cabinet
<b>Dimension (mm):</b>	700x700x850
<b>Total gas power (Kcal/h):</b>	11780
<b>Total gas power (kW):</b>	13,7
<b>Nr. Wells:</b>	1
<b>Well litres 1:</b>	50
<b>Well dimensions 1 (mm):</b>	Ø400x475
<b>Gas connection:</b>	1/2"
<b>Drain size:</b>	1 1/2"
<b>Net volume (m3):</b>	0,417
<b>Packing dimensions (mm):</b>	880x856x1274
<b>Gross weight (Kg):</b>	94
<b>Gross volume (m3):</b>	0,960

### Features

<b>Working top:</b>	Realizzato in acciaio inox AISI 304 con spessore 10/10 mm
<b>Type of heating:</b>	Indirect
<b>Knobs:</b>	Knobs are made from a sturdy heat-resistant polymer blend and are equipped with liquid anti-leakage washer
<b>Water inflow:</b>	With tap positioned on the top
<b>Kit Gas:</b>	natural gas conversion kit 30/50 m/bar (tested with natural gas G20)

**Technical draw**



**G:** Gas connection 1/2"

**H2O:** Water inflow 3/4"